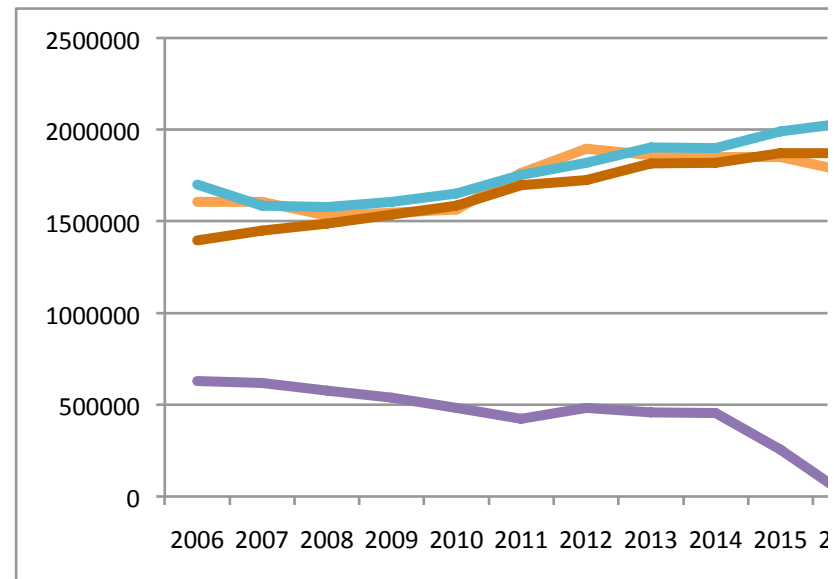


<b>Town of Oswego</b>							
<b>Combined Funds (General Fund and Highway)</b>							
<b>Narrative</b>	<b>2006</b>	<b>2007</b>	<b>2008</b>	<b>2009</b>	<b>2010</b>	<b>2011</b>	<b>2012</b>
Fund Balance	630,838.00	619,633.00	577,647.00	538,234.00	484,240.00	423,757.00	482,459.00
Actual Total Revenue	1,607,113.00	1,605,587.00	1,531,053.00	1,547,692.00	1,564,260.00	1,763,678.00	1,896,411.00
Actual Total Expendature	1,699,227.00	1,587,066.00	1,577,904.00	1,605,946.00	1,653,254.00	1,751,877.00	1,817,709.00
Surplus/Deficit	(92,114.00)	18,521.00	(46,851.00)	(58,254.00)	(88,994.00)	11,801.00	78,702.00
Actual Total Revenue	1,607,113.00	1,605,587.00	1,531,053.00	1,547,692.00	1,564,260.00	1,763,678.00	1,896,411.00
Budgeted Total Revenue	1,395,959.00	1,448,331.00	1,488,624.00	1,537,624.00	1,586,920.00	1,697,558.00	1,723,558.00
Difference	211,154.00	157,256.00	42,429.00	10,068.00	(22,660.00)	66,120.00	172,853.00
	115.13%	110.86%	102.85%	100.65%	98.57%	103.90%	110.03%
Budgeted Total Expenditures	1,395,959.00	1,448,331.00	1,488,624.00	1,537,624.00	1,586,920.00	1,697,558.00	1,723,558.00
Actual Total Expendature	1,699,227.00	1,587,066.00	1,577,904.00	1,605,946.00	1,653,254.00	1,751,877.00	1,817,709.00
Difference	(303,268.00)	(138,735.00)	(89,280.00)	(68,322.00)	(66,334.00)	(54,319.00)	(94,151.00)
	121.72%	109.58%	106.00%	104.44%	104.18%	103.20%	105.46%

deficit spending 8 out of 11 years  
 Over spent expenditures 11 of 11 years  
 Over estimated revenue 3 of 11 years, including last 2  
 2016 sales tax revenue was overestimated by \$77006 and 2015 by \$25231  
 2016 mandated (by contract) health care costs under estimated by \$84380.76  
 State aid revenue was overestimated by \$2972 each of last 6 years



2013	2014	2015	2016
459,716.00	455,700.00	257,530.00	12,452.34
1,860,663.00	1,850,034.00	1,851,212.00	1,774,169.43
1,903,676.00	1,897,942.00	1,990,095.00	2,034,739.69
(43,013.00)	(47,908.00)	(138,883.00)	(260,570.26)
1,860,663.00	1,850,034.00	1,851,212.00	1,774,169.43
1,816,308.00	1,820,692.00	1,871,040.00	1,872,217.00
44,355.00	29,342.00	(19,828.00)	(98,047.57)
102.44%	101.61%	98.94%	94.76%
1,816,308.00	1,820,692.00	1,871,040.00	1,872,217.00
1,903,676.00	1,897,942.00	1,990,095.00	2,034,739.69
(87,368.00)	(77,250.00)	(119,055.00)	(162,522.69)
104.81%	104.24%	106.36%	108.68%

